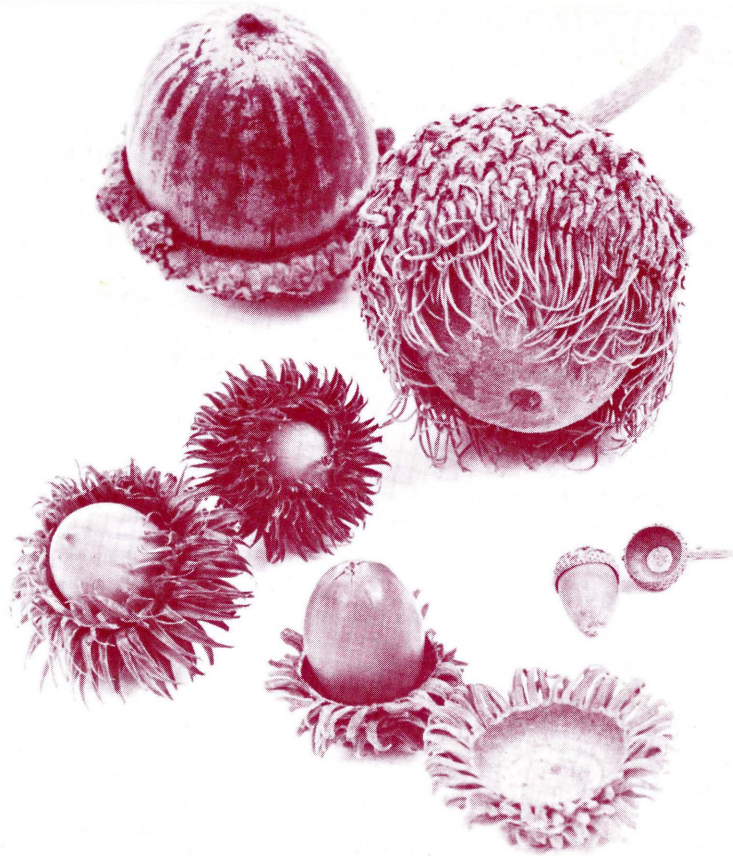


AUTUMN 1988

EVENTS,
NEWS,
&
CLASSES

The Morton Arboretum



EVENTS

SEPTEMBER

- Week-ends** **Open-Air Bus Tours**, Visitor Center, 1 and 2 p.m. **
- 2-3** **Plant Sale Pickup**, Greenhouse, 10 a.m. to 4 p.m.
- 4** **Introducing the Arboretum Tour** (free), Visitor Center, 2 p.m.
- 7** **Nature Study & Camera Club Meeting**, TBA, Thornhill, 7:30 p.m.
- 11** **Illinois Prairie Week Rambles**, Visitor Center, 1 and 3 p.m. **
- 17** **Nature Ramble: Wild Edible Plants**, Visitor Center, 1 p.m. **
- 18** **Introducing the Arboretum Tour** (free), Visitor Center, 2 p.m.
- 21** **Nature Study & Camera Club Meeting**, TBA, Thornhill, 7:30 p.m.
- 24** **Exploring a Woodland Legacy**, Visitor Center, 1 p.m. **
- 24-25** **Family Fair**, East Side, 10 a.m. to 5 p.m. *
- 25** **Looking at Plants Tour: Woody Plants with Attractive Fruits**, Visitor Center, 2 p.m. **
- 26** **Bonsai Society Meeting**, Research Center, 7:30 p.m.

OCTOBER

- Week-days** **Open-Air Bus Tours**, Visitor Center, 1 and 2 p.m. (throughout the month) **
- Week-ends** **Open-Air Bus Tours**, Visitor Center, 11 a.m., 12:30, 2 and 3:30 p.m. (throughout the month) **
- 1** **Nature Ramble: Round Meadow Lane**, Visitor Center, 1 p.m. **
- 1-2** **Annual Bonsai Show**, Thornhill Conference Center, 10 a.m. to 5 p.m., \$1 per person, children under 12 free.
- 2** **Introducing the Arboretum Tour** (free), Visitor Center, 2 p.m.
- 5** **Nature Study & Camera Club Meeting**, TBA, Thornhill, 7:30 p.m.
- 6** **Nature Artists' Guild Meeting**, Research Center, 7 p.m.
- 8** **Exploring a Woodland Legacy**, Visitor Center, 1 p.m. **
- 9** **Looking at Plants Tour: Illinois Natives for Fall Color**, Visitor Center, 2 p.m. **
- 10** **Columbus Day-Family Holiday Ramble**, Visitor Center, 1 p.m. **
- 10** **Open-Air Bus Tours**, Visitor Center, 11 a.m., 12:30, 2 and 3:30 p.m. **
- 15** **Nature Ramble: Trees Trail-Loop 3 in Fall**, Visitor Center, 1 p.m. **
- 16** **Introducing the Arboretum Tour** (free), Visitor Center, 2 p.m.
- 19** **Nature Study & Camera Club Meeting**, TBA, Thornhill, 7:30 p.m.
- 24** **Bonsai Society Meeting**, Research Center, 7:30 p.m.
- 30** **Looking at Plants Tour: Evergreen Shrubs**, Visitor Center, 2 p.m. **

- 2** **Nature Study & Camera Club Meeting**, TBA, Thornhill, 7:30 p.m.
- 5** **Ski Volunteer Orientation**, training for returning Ski Trail Patrol, Research Center, 9:30-10:30 a.m. *
- 6** **Introducing the Arboretum Tour** (free), Visitor Center, 2 p.m.
- 10** **Nature Artists' Guild Meeting**, Research Center, 7 p.m.
- 12** **Nature Ramble: Berries & Seeds - Autumn Harvest**, Visitor Center, 1 p.m. **
- 12** **Ski Volunteer Orientation**, training for new Ski Trail Patrol, Cudahy, 9 a.m. to 12:30 p.m. *
- 13** **Chamber Concert**, Orion Chamber Ensemble, Thornhill, 2:15 p.m. *
- 16** **Nature Study & Camera Club Meeting**, TBA, Thornhill, 7:30 p.m.
- 16** **Ski Volunteer Orientation**, training for returning Ski Trail Patrol, Cudahy, 7:30 to 8:30 p.m. *
- 21** **Bonsai Society Meeting**, Research Center, 7:30 p.m.
- 27** **Looking at Plants Tour: Winter Protection for Woody Plants**, Visitor Center, 2 p.m. **

DECEMBER

- 1** **Nature Artists' Guild Meeting**, Annual Meeting & Mini Gallery: Member's Choice, Research Center, 7 p.m.
- 3** **Ski Sign-Up Day**, Cudahy, 9 a.m. to 2 p.m.
- 4** **Introducing the Arboretum Tour** (free), Visitor Center, 2 p.m.
- 4** **Ski Volunteer Orientation**, training for new Ski Trail Patrol, Cudahy, 1 to 4:30 p.m. *
- 10** **Nature Ramble: Observing Winter Wildlife**, Visitor Center, 1 p.m. **
- 10** **Ski Volunteer Orientation**, training for new and returning Ski Registration volunteers, Outpost, 9:30 to 10:30 a.m. *
- 18** **Chamber Concert: Chicago Brass Quintet**, Thornhill, 2:15 p.m. *
- 24** **Christmas Eve**, buildings close at noon.
- 25** **Christmas Day**, all buildings closed.
- 26** **Yuletide Celebration**, Visitor Center, 2:15 p.m.

*Pre-registration and/or fee required.

**Open-Air Bus Tours \$1.50 per person; Rambles, Looking at Plants, Exploring a Woodland Legacy, \$1 per person, \$3 per family of 3 or more.

GUIDED WALKS & TOURS

The Arboretum offers a variety of guided experiences for its visitors. Some are quite casual, and others more exploratory and lengthy. All are led by qualified guides. A limited number of tickets for walks and tours is available at the Visitor Center Information Building on a daily first-come, first-served basis. Occasionally, we must cancel due to inclement weather.

The following is an overview of these activities. See the Events Calendar for specific dates.

Open-Air Bus Tours

This 50-minute guided tour follows the main route through the entire Arboretum. Open to the sky, the ride can be breezy, but also full of information about the history, landscapes, and current work of the Arboretum.

Looking At Plants

This 1 hour, outdoor guided program takes visitors to various gardens and special plant collections for a closer look at some of the Arboretum's very best ornamental plants for home landscaping.

Introducing the Arboretum

This is a 1½-2 hour, indoor/outdoor guided walking tour through some of the major facilities and landscapes of the Arboretum. As an overview, it includes a bit of history and views of some garden areas and the Research Center. A good program for those who are new to the Arboretum.

Exploring A Woodland Legacy

This 2 hour guided program is an opportunity to hike through native woods to explore their natural history and beauty. Seasonal emphasis on wildflowers or autumn color; and on examples of the ecological impact of urbanization. Paths may be rough or steep. Outdoor clothing and footwear recommended.

Nature & Holiday Rambles

Rambles are short, (1½ hr.) casual guided walks intended for individuals and families. These walks take us to various parts of the grounds to explore seasonal landscapes and wildlife from a naturalist's viewpoint.

PRE-AUTUMN SALE AT THE GINKGO SHOP

The Ginkgo Shop, located on the lower level of the Visitor Center Information Building, will offer a pre-autumn sale this year. Many gift items and some books will be discounted. Also offered will be irregular and soiled soft goods which will be greatly reduced; however, sizes are limited. The sale is planned for Saturday, August 14 through Saturday, August 20. The Ginkgo Shop is open from 9:30 to 5 Monday through Saturday and noon to 5 on Sunday. Come and find your fancy.

AUTOGRAPHING PARTY

The Morton Arboretum's staff photographer, Gary M. Irving, will be available in the Visitor Center on Wednesday, September 14th from 1 to 3 p.m. to sign his latest book, *Illinois*. A limited number of copies will be available for purchase in The Ginkgo Gift Shop.

Gary is a seasoned, professional photographer with two other books of photo essays to his credit: *Vermont* (1985) and *Chicago — The Light Along the Lake* (1986). His current publication, *Illinois*, contains a few photographs taken at The Morton Arboretum.

EVENTS & NEWS

FAMILY FAIR, SEPTEMBER 24 & 25

Make plans now to bring your family to a weekend of outdoor delights for the young and young-at-heart. Children's games, nature activities, storytellers, tree tours, balloons, taffy apples, music and more will provide excitement along the midway.

The Family Fair will be open from 10 a.m. to 5 p.m. both Saturday and Sunday. Normal admission fees will apply. Some activities will have an additional fee.

If you think you're too old to participate as a child, but love the idea of the fair, come and volunteer! To get involved behind-the-scenes, please call the Volunteer Office at 719-2443 or 968-0074.

SEVENTH ANNUAL BONSAI SHOW

Mark your calendar for October 1 & 2, 10 a.m. to 5 p.m., when the Morton Arboretum Bonsai Society's annual fall show will be open to the public at the Arboretum. There will be a **large display of bonsai trees** and an educational exhibit in the Thornhill Building, daily **demonstrations of how to train small trees as bonsai** in Cudahy Auditorium, movies, workshops with bonsai masters, and opportunities to talk informally with knowledgeable Society members. Vendors will have bonsai stock plants, pots, tools, books and other **materials for sale**. For a modest entrance donation of \$1 (in addition to the Arboretum gate fee if you are not an Arboretum member), you can enjoy the exhibits, attend a master's demonstration, and see the movies. Children under 12 years old require no entrance donation. Your entrance donation supports Morton Arboretum Bonsai Society activities at the Arboretum.

Featured bonsai artists in residence at our fall show are Susumu Nakamura from Japan and Randy Clark from Minneapolis. Mr. Nakamura, a director of the Japanese Bonsai Society, is by consensus considered to be one of the world's most outstanding bonsai artists and teachers. Mr. Clark is a leading bonsai artist and teacher of our region who is an officer of the National Bonsai Foundation and author of a forthcoming book on outstanding American bonsai. Clark will conduct Saturday's public demonstration, while Nakamura will be featured on Sunday. Both demonstrations begin at 1 p.m.

Attendance in workshops is by advance registration only. If you are interested in registering for a master workshop with one of the featured artists, please call Virginia Gaffor at 312/766-3029.

This popular event is well known for its outstanding quality. If you are coming to the Arboretum to enjoy our uniquely beautiful fall color, plan to visit the bonsai show at the same time!

BONSAI SEMINAR FOR PLANT PROFESSIONALS

On Tuesday, Nov. 1, the Arboretum will offer an all-day seminar on bonsai, led by Dr. Ross Clark, the Arboretum's Curator of Adult Education, and by Ivan Watters, Chicago's premier bonsai artist. The seminar is intended for professionals in the plant industries (nurseries, garden centers, greenhouses, interiorscape firms, flower shops, etc.).

The purpose of the seminar is to give comprehensive information about this rapidly increasing market opportunity. We will be mailing a detailed announcement in early fall. If you would like to be sure you receive the announcement, please call the Arboretum Registrar at 312/719-2468 and ask to be put on the bonsai seminar mailing list.

1988-89 MEMBERS' CHAMBER CONCERT SERIES SUBSCRIPTIONS

The Arboretum will offer series subscriptions for the 1988-89 Chamber Concert Series. The subscription price for the five-concert series is \$32, with individual concert tickets priced at \$7 each. **Requests for series subscriptions should be mailed before October 11 to: Chamber Music, The Morton Arboretum, Lisle, IL 60532.** Please enclose a stamped, self-addressed envelope for series tickets.

Individual concert tickets will be available beginning October 11 at the above address. Please enclose a stamped, self-addressed envelope with your request for individual tickets.

The Arboretum's after-concert receptions afford an opportunity to meet and talk with the musicians and fellow music lovers in the intimate setting of the Founder's Room. All concerts are scheduled for 2:15 p.m. at the Thornhill Conference Center.

- **November 13, 1988:** Orion Chamber Ensemble
- **December 18, 1988:** Chicago Brass Quintet
- **January 8, 1989:** Exsultate Trio
- **February 19, 1989:** Baritone, Lute and Reader, with Wayland Rogers, Mark Southard, and Ian White
- **March 19, 1989:** Ethos Chamber Orchestra

NATURE ARTISTS' GUILD FALL MEETINGS

On October 6, the fall meeting of the Nature Artists' Guild of The Morton Arboretum will feature Timothy R. Botts, master teacher of calligraphy. He received his BFA in graphic design from Carnegie-Mellon University, with four years of study under Arnold Banks in calligraphy. As Art Director of Tyndale House Publishers since 1978, Botts has designed over 500 books, and has recently written and illustrated two books. He has taught calligraphy at the College of DuPage since 1975 and has given workshops throughout the Midwest, in New York and in Canada. This award-winning calligrapher and internationally recognized teacher will share his expertise in a program that will include slides of his work and a demonstration of calligraphy used on botanical prints. A "mini-gallery" will show Guild member's art work in an "Explosion of Color."

On November 10, the Nature Artists' Guild will hold a special meeting to present professional artist Ellen Lanyon in a slide show focused on "Nature Art." A Chicagoan now



Come to the Family Fair for fun, education, and entertainment.

living in New York, she is frequently featured in solo exhibitions from California to Rome. Most recently, her vivid, glowing images were in a 40-year retrospective exhibit in the Chicago Public Library Cultural Center. Lanyon's art is represented in over fifty public and corporate collections. In a style she calls "magic realism," science, magic, plants, found objects, wildlife, and landscapes meet in stylized, inventive arrangements. A "mini-gallery" will feature Guild member's art work on the theme of "Autumn Treasures."

Guild meetings are open to any visitors interested in natural history art. Four meetings are scheduled per year on the first Thursdays of March, May, October, and December from 7 to 9 p.m. in the Research Center lower level classroom.

ARBORETUM STAFF PERSONNEL CHANGES

Effective August 1, Carol Doty, former Education Group Administrator, assumed new duties as Curator of Special Programs in Education, and Craig Johnson, former Development Officer, became Education Group Administrator. This arrangement places both of these persons in areas where they can make unique contributions which will benefit the Arboretum.

Ms. Doty's role will be to serve as Arboretum Historian, write an Arboretum history, continue to build and curate the archival collections relating to Midwest landscape/conservation studies, and to initiate educational programs integrating these and more current landscape management concerns. She will also continue to give special lectures, chair several public events, and supervise the Members' Cross-Country Ski Program.

Mr. Johnson has been active in the Education program since 1980, serving as Naturalist/Guide, working as an information specialist in the Visitor Center, and teaching regularly in the educational program. His depth of subject knowledge, commitment to conservation-activism and previous training and experience in education and administration will prove most useful in his new position.

Effective August 15, William Borden assumed the duties of Development Officer, previously performed by Craig Johnson. Mr. Borden, as Executive Director of the DuPage Environmental Awareness Center, has maintained an office at the Arboretum. He will be continuing his activities with this organization while serving in his new position.

Mr. Borden has a B.A. degree in Broadcast Communications from Michigan State University and a degree in Environmental Education and Interpretation from Aurora University. He was president of a sales/promotion firm, Borden & Associates, from 1980-1986, and also Broadcast Producer for Grey-Chicago Advertising and Byer & Bowman Advertising. Earlier he worked as a radio announcer for stations in Michigan. The combination of business skills plus an intense interest in the environment uniquely suit him to this new position.



Carol Doty

RECENT GRANTS FOR TOURING BUS

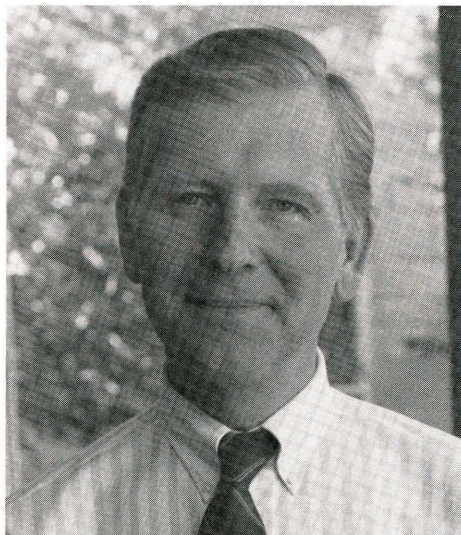
Of the \$111,650 needed for the new two-unit, all-weather touring bus, we have received a total of \$95,000 to date. Though we are near the goal, we are continuing to seek gifts which will bring the project to completion.

Recent Corporation and Foundation grants include:

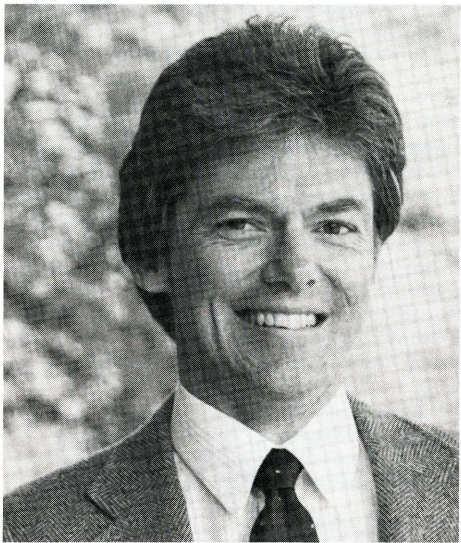
- \$5,000 from the Nalco Foundation, a corporate foundation whose parent is the Nalco Chemical Company. Nalco is a world-wide company whose corporate offices are in Naperville, Illinois.

- \$5,000 from the Dr. Ralph and Marian Falk Medical Research Foundation. Though organized primarily for medical research, the Falk Foundation does support selected cultural institutions.
- \$5,000 from the A. Montgomery Ward Foundation which supports a variety of projects primarily in the Chicago area.

Both the Falk and Ward foundations are new grantors to the Arboretum. The Nalco Foundation has provided support annually for the past four years.



Craig Johnson



William Borden

LANDSCAPE RESTORATION COLLOQUIUM

On Sunday, September 18, the Illinois Historic Preservation Agency will present a Landscape Restoration Colloquium here in cooperation with the Garden Clubs of Illinois and The Morton Arboretum. The program, to be held at the Thornhill Conference Center, will begin at 1:00 p.m. with a talk on "Illinois Plants for Illinois Gardens" by Anthony Tyznik, Landscape Architect at The Morton Arboretum.

Also on the program will be "The Landscape Art of Jens Jensen and the Prairie School" by Christopher Vernon, who is the Edward L. Ryerson Fellow in the Department of Landscape Architecture, University of Illinois at Urbana-Champaign; and "Period Landscapes and Gardens: Their Identification and Restoration" by Dr. Daryl Watson, Executive Director of the Galena/Jo Davies County Historical Society and author of *Dooryard Gardens*.

To register for this program, send your name, address, telephone number, and a check for \$5 made out to the Garden Clubs of Illinois, to: The Garden Clubs of Illinois Office, The Morton Arboretum, Lisle, IL 60532.

ARBORETUM RECEIVES IMS GRANT

The Institute of Museum Services (IMS) has awarded the Arboretum a 1988 general operating support grant for \$75,000. This is the maximum sum the agency awards.

IMS is an independent federal agency created by Congress in 1976. The Agency's purpose is to preserve our nation's cultural, historic and scientific heritage by helping museums develop their educational role through updated methods and facilities.

IMS received 1,311 applications for the 1988 competition and made 402 awards totaling \$17,045,000. Each application is evaluated by four independent peer reviewers. All four placed the Arboretum in the leadership category.

BRANCH OUT AT THE ARBORETUM—VOLUNTEER!
Autumn is traditionally a season in our lives for new endeavors after the lazy days of summer holidays. It is also the season of cool days and brilliant colors. Why not begin your new endeavor right here this autumn and enjoy this beautiful season from behind the scenes at the Arboretum?

- **Family Fair (September 24-25):** We need your help! If you like children and old-fashioned fairs, come and enjoy the Family Fair from behind-the-scenes as a balloon-seller, taffy appler, cider presser or activity leader. Half day shifts on either Saturday or Sunday.
- **Visitor Center Information Aides:** The Visitor Center is expanding its weekday and weekend volunteer force. This is a job that requires a knowledge of the Arboretum (and a strong interest to learn more), an ability to communicate effectively with our visitors, and some clerical skills. One day weekly on a weekday basis; weekend schedules are flexible.
- **Herbarium Assistants:** Learn about the Arboretum's vast indoor collection of dried and pressed plants. Volunteers help collect, mount, label and catalog specimens. Ideal opportunity to learn plant classification—or simply enjoy a unique kind of nature craft! One half day weekly on a weekday basis only.
- **Kitchen Aides:** Our Resident Program provides a 2½ day (and night) experience for groups of local fifth-graders here at the Arboretum. For two months in the autumn and again in spring, we're looking for people who like to work with children to help at meal times with catered meals (no cooking!). If you have a couple of spare hours each week to help out at breakfast (7:15-9:15), lunch (11:30-1:30) or dinner (4:30-6:30) and enjoy the kitchen and working with children, the Arboretum could use your help!
- **Graphic Arts Technician:** Our graphic arts support staff works closely with other Arboretum staff in designing and producing a broad range of graphics projects. Using basic graphic tools, the volunteer technician will assist in publication and exhibit preparation. Artistic ability is not required, but accuracy, care and attention to detail are essential. One day weekly on a weekday basis.

For further information about these and other volunteer opportunities at the Arboretum, please call the Volunteer Office at 719-2443 or 968-0074.

CORPORATION GRANTS
Two recent corporation grants to the Arboretum are strengthening important training and professional enrichment programs.

International Minerals and Chemical Foundation has made a \$2,000 grant in support of teacher training classes offered through our Education Department. The project is designed to enrich and enhance the skills of science teachers in Chicago area primary and secondary schools through continuing education in the biological and ecological sciences.

McDonald's Corporation has made a \$5,000 grant in support of the 1988 Summer Intern Program in our Research Department. College and university students receive orientation and training for their continued studies and careers through exposure to our active research staff and involvement with their projects.

AUTUMN MUM SALE
Again this year chrysanthemum plants, in several cultivated varieties, will be offered to our members and friends. Unless our supply proves to be overstocked, the plants will be available only through the Pre-Sale Order Form which will be mailed to Arboretum members in July.

The order blank must be *received* with your order no later than August 15. Plants are not delivered. Pick up days will be August 27 and September 2 and 3, from 10 a.m. to 4 p.m.*

Nine varieties are offered this year for both early and mid-season blooming. Colors and flower sizes are detailed on the order blank. Proceeds from the sale benefit the Arboretum's Prairie Restoration Project and the reconstruction of a wet prairie along the banks of Willoway Creek as it passes through the prairie.

If, after ordering, you would like to increase your order, please phone Craig Johnson at the Arboretum (719-2407) to determine if additional plants are available.

*Plants are picked up at the Arboretum greenhouses. Use the Research Center parking lot with its separate entrance from Route 53.

PEORIA TO HOST PRAIRIE CONFERENCE
The Second Central Illinois Prairie Conference will be held 24-25 September 1988 at beautiful Wildlife Prairie Park, just outside of Peoria, Illinois. The conference will cover a variety of topics related to prairie ecology and management techniques, utilizing formats such as group sessions, workshops, roundtable discussions, expert speakers, and field trips to local areas of interest. Dr. Virginia Kline, Director of the University of Wisconsin Arboretum, has been scheduled to deliver the keynote address.

The \$20 advance registration fee will include all conference materials and programs, admission to and lunch at Wildlife Prairie Park, and eligibility to attend scheduled field trips. Discounted admission to Wildlife Prairie Park will be available to non-attending family members accompanying conference registrants.

The conference is being organized by Grand Prairie Friends of Illinois in conjunction with several other state, regional, and local organizations. Program brochures, registration packets, and exhibitor information may be obtained by writing:

Grand Prairie Friends
1988 Prairie Conference
P.O. Box 9059
Peoria, Illinois 61614

IN MEMORY OF CLARENCE GODSHALK
Mr. Clarence Godshalk, Director Emeritus of The Morton Arboretum, died on April 20, 1988 at the age of 91.

Mr. Godshalk came to Lisle in 1921, just as Joy Morton was beginning to build his Arboretum. In 1922, he was appointed Superintendent, and upon Mr. Morton's death in 1934 he became the Arboretum's second Director, Mr. Morton being the first. After retiring in 1966, he continued to live on the Arboretum grounds.

During his tenure as Director, Mr. Godshalk guided the Arboretum toward its present international position among botanical gardens. In 1962, because the original prairie that once covered Illinois was almost completely destroyed, he began one of the first restoration projects in the region. He was one of the founders of the American Association of Botanical Gardens and Arboreturns (AABGA) in 1940, and has been the recipient of awards from several botanical societies.

During his retirement, Mr. Godshalk continued to serve as a landscape consultant and actively pursued activities pertaining to photography, natural area preservation, and attracting wildlife.

EMILY RODGERS DAVIS CHAIR FILLED
Dr. Christopher J. Whelan has been selected to fill the Emily Rodgers Davis Chair. Established for research in plant-animal interrelationships within the Arboretum and other areas of interest to us, the Chair is made possible through the gift of an endowment from Dr. David E. Davis in memory of his wife Emily Rodgers Davis.

Dr. Whelan is currently at Shelford Vivarium on the Urbana-Champaign campus of the University of Illinois working on postdoctoral research in the Department of Ecology, Ethology, and Evolution. He will join the Arboretum staff on January 1, 1989. The ecology of birds, mammals and plants will be his primary focus.

MEMBERS' SKI PROGRAM, WINTER 1989
A good way to enjoy the Arboretum's winter beauty is to enroll in the Members' Cross-County Ski Program. To participate, you must be an Arboretum member and must obtain a Ski ID card. Cards will be available in the Visitor Center beginning December 1. If you are a new Arboretum member, we encourage you to attend the Ski Sign-up Day, Saturday, December 3, in Cudahy Auditorium anytime between 9 a.m. and 2 p.m. In addition to getting your card, you will see a winter natural history program and receive trail and orientation information. Plan to get your card in December, if possible, to avoid delays on ski days.

Conditions permitting, the members' trail will be OPEN from MONDAY, JANUARY 2 through SUNDAY, MARCH 5. Please note: **there will be no skiing in December this year.** As in the past, skiing will be controlled. Skiers must show a current Ski ID card, sign in and out at the Visitor Center, wear numbered identification, and **ski only on the marked, patrolled trail.** The daily fee is \$2 for members and \$3 for guests (limited to 2 per skier per season).

Members were pleased with the new woodland trail we used last year, and we will follow the same route again. It is about five miles long with some nice hills and repeats, and it passes through varied areas of natural history interest.

We are indebted to volunteer leaders, Jym Bartuch and Dee Tevonian, and some 130 ski trail patrol and registration volunteers who make this program possible. Carol Doty, Curator of Special Programs in Education, is the staff supervisor for the Ski Program, assisted by Margo Brumis, Visitor Services Manager, and members of the Arboretum support staff.

IMPORTANT ARBORETUM PHONE NUMBERS	
The following are some of the direct phone numbers that you may wish to keep in your telephone file:	
General Information & Events	719-2400
Information on Adult	
Group Tours	719-2465
Information on Classes, School & Youth Visits	719-2468
Information on Membership	719-2466
Plant Clinic - Information on	
Trees and Shrubs	719-2424
Ginkgo Restaurant &	
Coffee Shop	719-2456
Ginkgo Gift Shop	719-2454
Volunteer Office	719-2443



Clarence Godshalk

A WORD ABOUT LEAF COLLECTING
With nearly 40,000 specimens of labeled trees and shrubs, and 500 acres of native oak-maple woodland, the Arboretum is an ideal place to become acquainted with a variety of trees. As a science museum, our goal is to preserve our plant collections for enjoyment, study and research. In the woods, our goal is to encourage the normal yearly cycle of leaf fall followed by the breakdown and decay of the leaves. This process releases needed fibers and nutrients into the forest soil, providing the best situation for the continuing growth of wildflowers, tree seedlings and other forest plants. It is for these reasons that we ask you not to collect leaves from the trees or from the ground. Thank you for your cooperation.

We often get requests to aid in the collecting of leaves for school projects. As a result, we have developed a guided program to help students and teachers with such assignments. This program is called "Recognizing Trees and Their Leaves" and is offered in the autumn of each year. For details, ask at the Information Desk or call the Registrar at 719-2468.

IN MEMORY OF DANIEL PETERKIN, JR.
Mr. Daniel Peterkin, Jr., Trustee of The Morton Arboretum and retired Chairman and President of Morton-Norwich Products Inc. died on May 11, 1988 at the age of 82.

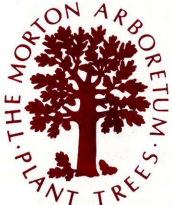
Mr. Peterkin, a graduate of Princeton University, joined Morton Salt Co. in 1928, became a Director and Vice-President in 1937 and succeeded his father as President in 1941. Under his leadership, the Chicago-based company expanded from being the nation's top salt producer to also a major pharmaceutical company. He retired as Chairman and President of Morton-Norwich Products, Inc. in 1972. At the time of his death, he was serving as President of Stenning Industries, Inc., an investment firm.



Daniel Peterkin, Jr.

LIBRARY MARKS 25TH ANNIVERSARY
The Sterling Morton Library was dedicated on October 22, 1963. To celebrate the 25th anniversary of the opening of the Library there will be a reception for guests from the library community on Friday, October 21, at 7:30 p.m. A distinguished librarian who was present at the dedication will give an address and the new librarian of the Sterling Morton Library will be introduced. An exhibition of rare books and prints will be displayed for the occasion.





CLASSES

IMPORTANT INFORMATION

TRAVEL & PARKING

Please plan travel time so that you arrive promptly for classes. Parking space may not be available in the Research Center parking lot on busy evenings. At those times, **overflow parking** is available in the Administration Building staff parking lot or Visitor Center parking lot, a short walk from the Administration Building. If you have heavy or bulky materials to carry and need to park closer, please come early.

DRESS & WEATHER

In seasons other than winter, Arboretum classes and field trips are held regardless of weather. Comfortable and appropriate field clothing, including walking shoes, is advised for outdoor activities.

*Appropriate identification aids, such as binoculars, hand lenses and field guides, are recommended for these activities.

NATURAL HISTORY

N014a FIELD NATURAL HISTORY* (weekday)

Learn more about the many natural phenomena and interrelationships that are evident in the fall season. This class will emphasize careful observations in the woods, fields and prairies of the Arboretum. Leader: Dick Wason. 10 **Tuesdays**, 9:30 to noon, Sept. 20—Nov. 22. **Outpost Building**. Fee: \$54 (members, \$44). Limit, 20.

N014b FIELD NATURAL HISTORY* (weekend)

Autumn is a time when all living things in our region begin adjusting in many interesting ways to shorter days and winter to come. This behavior will form the backdrop of our studies of trees, wildflowers, mammals, insects, and their interrelationships. One of our special projects will be tree identification, and each student will make a reference collection to take home. We will spend most of each session outdoors, regardless of weather. Leaders: Helen Pierce & Marj Walls. 6 **Saturdays**, 9 a.m. to noon, Sept. 17—Oct. 22. **Downstairs classroom, Thornhill Building**. Fee: \$38 (members, \$32). Limit, 20.

N003a PRAIRIE PEDALING*

Saturday, Sept. 17, 7:30 to 9:30 a.m. The prairie in autumn is a place of special appeal. Enjoy the colors of early fall with a leisurely bicycle ride through the Arboretum and a walk into the restored prairie to experience its seasonal aspect. Leaders: Helen Pierce & Carol Way. **Visitor Center parking lot**. Fee: \$3.50 (members, \$3). Limit, 30.

N003b CYCLING IN FALL COLOR*

Saturday, Oct. 15, 7:30 to 9:30 a.m. What more pleasant way is there to enjoy fall color than by bicycle? Because of the variety of our collections and our outstanding East Woods, the quality of autumn color at the Arboretum is truly unique. Bring your bicycle and join us for a leisurely ride and interpretive remarks about the season. Leaders: Helen Pierce & Carol Way. **Visitor Center parking lot**. Fee: \$3.50 (members, \$3). Limit, 30.

N060 BIRD WALK FOR BEGINNERS*

Saturday, Oct. 15, 8 to 10 a.m. A gentle jaunt to look and listen for birds and to learn recognition features for the common kinds. Leader: Dick Wason. Departure point: **Thornhill Building front steps**. Fee: \$3.50 (members, \$3). Limit, 20 (no organized groups, please).

N260 INTERMEDIATE BIRD WALK*

Saturday, Oct. 1, 8 to 10:30 a.m. Field observations of birds on the Arboretum grounds, for those with previous birding experience. No children or organized groups, please. Leader: Gloria Dobry. **Visitor Center courtyard**. Fee: \$3.50 (members, \$3). Limit, 20.

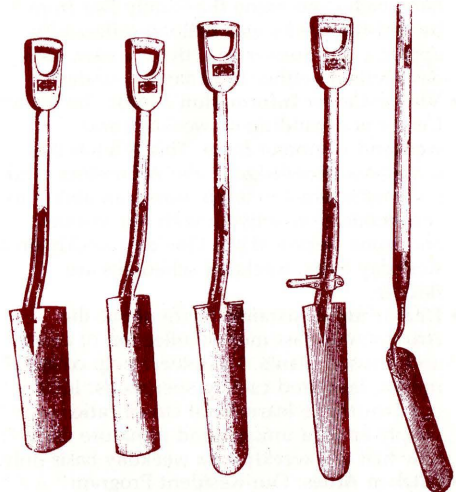
N265 ADVANCED BIRD WALKS*

Field observations of birds on the Arboretum grounds, for those with generous previous birding experience and sharp skills. Binoculars are essential. Leader: Floyd Swink. 5 **Tuesdays**, 8:30 to 11 a.m., Sept. 6—Oct. 4. **Visitor Center courtyard**. Fee: \$17.50 (members, \$15). Limit, 30.

N162 FALL IN THE PRAIRIE*

This guided fall walk in the Arboretum's Schulenberg Prairie Restoration will reinforce your insight into the interrelationships of prairie plants with animals, particularly insects. In addition, you'll renew your esthetic appreciation of prairie by experiencing the fall aspect of tall grasses, purple asters, goldenrods and other prairie plants of varied colors and textures. Leader: Marj Walls. **Parking lot 25**. Fees: \$6 (members, \$5). Limit, 20. **Section a: Friday**, Sept. 23, 1:30 to 4 p.m. **Section b: Saturday**, Sept. 24, 9:30 a.m. to noon.

The Arboretum's educational program, taken as a whole, is designed to foster understanding and appreciation of the importance that trees and other organisms have in natural ecological systems and in environments modified by humans, and to convey the responsibility each person must assume for the well-being of nature in our immediate, regional and world-wide surroundings.



HORTICULTURE & LANDSCAPING

H171 PLANNING AND MAINTAINING A PERENNIAL GARDEN

Areas of perennial flowers can set your yard apart from others in a special way, give you a great deal of personal enjoyment and accomplishment, and actually enhance the value of your property. Even if you have never grown perennials, this class will start you off right; if you do have experience, you will gain knowledge that will help you keep your perennial garden looking good year after year. Topics include how to choose the area to plant and its size, selection and sources of plants (with attention to those which are finicky and those which are not, drought-tolerant or not), proven techniques for growing and maintenance, and rejuvenation of beds. Use of native plants (wildflowers and prairie plants) and ground covers will be included. Students will receive the instructor's help in planning a perennial garden for their home lots. Leader: Pam Wolfe. 5 **Saturdays**, 9 to 11:30 a.m., Oct. 15—Nov. 12. **Horticulture Lab, Research Center**. Fee: \$34 (members, \$29). Limit, 20.

H225 EVERGREEN GROUND COVERS

Saturday, Sept. 17, 9:30 to 11:30 a.m. There are good spots in almost every yard for ground covers. They are good, low maintenance alternatives to grass, particularly in difficult or shady situations. Evergreen ground covers offer winter landscape color and texture as well. Join us for a walking tour as we discuss the growth forms, planting and cultural requirements, disease and pest problems, and propagation of low evergreens that are well-adapted to our region. Leader: Ann Hruska. **Administration Building patio**. Fee: \$6 (members, \$5). Limit, 20.

H230 TREE PLANTING WORKSHOP: COME AND HELP US PLANT ONE

Saturday, Sept. 17, 1 to 5 p.m. Why pay someone else to plant a tree for you and take a chance that it may not be done correctly? Fall is an ideal time to plant most kinds of trees, because trees have high food reserves, several months remain for root growth, and moisture stress is not excessive. As we plant a tree together, this workshop will take you through the entire process, from digging and modifying the hole, setting the tree, into discussion of post-planting watering, fertilizing and pruning. We will also give you a list of retail sources for some recommended trees you could plant this fall. Please wear clothes appropriate for tree planting. We'll furnish the tools and tree. Leader: Kris Bachtell. **Visitor Center courtyard**. Fee: \$11 (members, \$9). Limit, 25.

H330 LANDSCAPE PERCEPTION: HOW DO YOU FEEL ABOUT WHAT YOU SEE?

Thursday, Sept. 15, 2 to 4 p.m. All surroundings give signals that trigger basic responses in each of us. We may feel comfortable, rested, exhilarated, ill-at-ease, or something else. These responses may depend on the biological history of our species, our cultural history, individual experience, or on a blend of these and other factors. The Arboretum's landscapes often lead visitors to express pleasure, and to describe the setting as "restful," "satisfying" or "peaceful." But why? What are the intrinsic qualities of landscapes that can elicit such responses? On a walk in the Arboretum, we will explore human feelings about landscapes. This session should help you to become more keenly aware of your own responses to settings that include living plants and—we hope—get you thinking about what this may mean in a broader sense. Thoughtful landscapers are especially invited to participate. Leader: Charles Lewis. **Godshalk Hall, Thornhill Building**. Fee: \$6 (members, \$5). Limit, 15.

H378 THE BIOLOGY OF BONSAI

The most basic ingredient for success in bonsai is to understand the plants themselves, and how to keep them healthy in a confined space. You can only develop an artistic sense that allows you to create masterpieces by experience and practice, but we can help you understand the limitations and possibilities of the plants. We will consider how woody plants useful for bonsai are put together and how they function; how plant structures, self-maintenance and growth processes relate to bonsai training; soil characteristics related to growth, watering and fertilizing; ecological tolerances related to the culture of different species; wintering; collecting and transplanting; and other topics. Leader: Ross Clark. 5 **Wednesdays**, 7:30-9:30 p.m. Nov. 2—Dec. 7, omitting Nov. 23. **Room 010, Research Center**. Fee: \$43 (members, \$36). Limit, 27.

BOTANICAL ART & NATURE PHOTOGRAPHY

A001 DECORATING FOR CHRISTMAS

A workshop designed to help you make your own special decorations for the season! We will discuss materials, demonstrate techniques and, during the following work session, you will create your own decorations to take home. Bring some of your own materials for the items you wish to make—wire frames for wreaths, heavy cord and pliable wire for swags and roping, cones, candles, ribbons, etc. Greens can be purchased at the workshop at nominal cost, but we invite you to bring your own. Also, bring your pruning shears and lunch. Leader: Tony Tyznik. **Audubon Room, Thornhill Building**, 9:30 a.m. to 3:30 p.m. Fee: \$17 (members, \$14). Limit, 50. **Section a: Monday**, Dec. 5. **Section b: Tuesday**, Dec. 6.

A030 FALL NATURE PHOTO WALK

The Arboretum is one of the region's most outstanding locations to enjoy and photograph fall color. Our aim is to give you new insights on how to capture the special atmosphere of fall on film, so that you can enjoy it for years at all seasons. These walks (open to photographers of all skill levels) will take you a step further in landscape nature photography. Bring the camera of your choice. Departure point for both walks is **parking lot 9**. Fee: \$3.50 (members, \$3). Limit, 15. Leader: Gary Irving. **Section a: Friday**, Oct. 14, 8 to 11 a.m. (rain date: Sunday, Oct. 16, 8 to 11 a.m.) **Section b: Saturday**, Oct. 15, 8 to 11 a.m. (rain date: Sunday, Oct. 16, 2 to 5 p.m.)

A228 LANDSCAPE PHOTOGRAPHY

We all carry vivid memories of unforgettable scenery with us. This class will allow you to explore ways to translate what is seen in the natural landscape into stunning photographs that accurately portray the beauty of the scene. Topics will include different approaches, styles and techniques of landscape photography, from scenic panoramas to closeups. We will emphasize the use of the 35mm SLR, but will also explore the use of large format equipment. Students will have an opportunity to have their own photographic images critiqued. Leader: Gary Irving. 4 **Wednesdays**, 7 to 9:30 p.m., Oct. 5-26. **Room 011, Research Building**. Fee: \$29 (members, \$24). Limit, 27.

A110 BEGINNING BOTANICAL ART

Beginners in art and those interested in the botanical study of plants they are drawing are invited to join this class—high school and college students are welcome! As we study and draw the details of living plants from the Arboretum's collections, we will emphasize eye-hand coordination and develop our capacity to understand our subjects from a critical botanical standpoint. Drawing exercises, weekly assignments (completed at home) and critiques of work completed will be regular activities. A materials list will be sent to all registrants. Leaders: Peach Simonds, artist; Ed Hedborn, botanist. 6 **Tuesdays**, 7 to 9:30 p.m., Sept. 13—Oct. 18. **Botany Lab, Research Center**. Fee: \$43 (members, \$36). Limit, 15.

A210 INTERMEDIATE BOTANICAL ART **Prerequisite: a botanical art class or previous art experience.** Join us and continue to build your capacity for critical observation and skills as a botanical artist. We will focus on design and presentation while refining techniques in colored pencil and pen and ink, as we learn the botany of the plants with which we work. Be prepared to complete assignments at home. If you have previously enrolled in this class, we encourage you to continue on this level for a time. Leaders: Ann Norton, artist; Ed Hedborn, botanist. 6 **Tuesdays**, 7 to 9:30 p.m., Sept. 13—Oct. 18. **Horticulture Lab, Research Center**. Fee: \$43 (members, \$36). Limit, 15.

A310 THE ARTIST AS SCIENTIFIC ILLUSTRATOR

In this class, we will deemphasize composition and artistic interpretation in order to concentrate on portraying detail carefully and to use technical ability to give subtle emphasis to important features of plants for purposes of scientific accuracy. Our resources will include scientific publications from the library, microscopic examination, note taking, and comparisons outdoors in the field. We will stress black & white media and techniques. To the first class session, bring your sketchbook and a variety of pencils, from 5H to 6B. You will also find a hand lens, eraser and small transparent ruler to be very helpful. Leaders: Nancy Hart & other staff. 8 **Wednesdays**, 9:30 a.m. to noon, Sept. 28—Nov. 16. **Botany Lab, Research Center**. Fee: \$58 (members, \$49). Limit, 15.

CLASSES FOR YOUNG PEOPLE

YN002 AUTUMN EXPLORATIONS FOR PARENTS AND TOTS

Fall Saturdays as listed below This season of shorter days, changing temperatures, and colorful leaves is an ideal time to help your pre-schooler (age 4 to 5) focus on the changing seasons. After a short walk, children will make leaf rubbings to take home. All sections meet from 10 to 11:30 a.m. Leaders: Ray Brown, Marilyn Ellison, Arlene Koerner, Ida Gabler. **Godshalk Hall, Thornhill Building**. Fee: \$4 (members, \$3.50). Limit 15 children (with parent or grandparent) per section. **Section a: Sept. 17** **Section b: Oct. 1** **Section c: Oct. 22** **Section d: Nov. 5**

YB100 KNOWING YOUR TREES

Fall Saturdays as listed below Leaf collections have been a traditional school assignment for years and the Arboretum's tree collections seem to make it a natural place for making the collection. But wait a minute! **The Arboretum does not allow collecting. However, if you sign up for this class, we will make an exception to the rules.** We will help you identify 15 to 30 trees, collect leaves, and learn about the trees themselves. Sorry, but we cannot promise all the trees your teacher may have assigned. Fee includes a copy of *Tree Finder*, by May Watts and a pamphlet to hold your collection. Participants should meet the instructor on the **front steps of the Thornhill Building**. All sections meet from 12:30 to 3:30 p.m. Limited to children 7 to 12 years old. Leaders: Mary Rice, Marj Walls, Carol Way, Sally Baumgardner, Emily Galvin, Alice Burkman, Helen Pierce, Nancy Ludwig, Marilyn Ellison. Fee: \$9 (members, \$8). Limit, 30. **Section a: Oct. 8** **Section b: Oct. 15** **Section c: Oct. 22** **Section d: Oct. 29** **Section e: Nov. 5**

YN114 AUTUMN NIGHT HIKE

Saturday, Oct. 29, 6:30-8:30 p.m. At dusk the outdoor world changes. A well-known woods in daylight may seem to become strange and secretive when the sun sets. But if you walk through the meadows and woodlands in the Arboretum at dusk, you will discover a different and fascinating nocturnal world. We will look for owls, the tracks of animals who come out at night, and learn about the Indians who lived here in the past. Limited to children 9 to 12 years old. Leaders: Mary Rice & Sally Baumgardner. **Outpost Building**. Fee: \$5 (members, \$4.50). Limit, 30.

YB171 THE WOODLANDS AND THE TREES

Saturday, Oct. 22, 9:30 to 11:30 a.m. As autumn arrives in the woodland, leaves change color, while plants and animals begin to prepare for winter. Spend a morning as a detective discovering the changes taking place in the woods. Learn to recognize some of the trees, and make a leaf collage to take home. Limited to children 6 to 8 years old. Leader: Helen Pierce. **Outpost Building**. Fee: \$6 (members, \$5). Limit, 15.

YN291 INSECTS!!

Saturday, Oct. 1, 9:30 a.m. to 2 p.m. The most common advanced land animals on earth, insects live, eat and behave in almost every way you can imagine. Join our group of other detectives as we roam the Arboretum's fields, prairies and woodlands to listen, watch, catch, observe and release these fascinating animals and learn about their ecologically important ways. Bring a lunch. Fee includes a bug box to take home. Limited to children 9 to 12 years old. Leader: Mary Rice. **Outpost Building**. Fee: \$12 (members, \$10). Limit, 14.

TEACHERS' WORKSHOPS

T310 SELF-GUIDING CERTIFICATION WORKSHOP

Saturday, Oct. 1, 9:30 to noon. When you self-guide your student groups at the Arboretum, one Arboretum-certified leader is required for every 10 students. To become certified to self-guide, teachers and group leaders must attend a Certification Workshop. Certification must be renewed every three years to remain eligible to self-guide. **Register by using the regular registration form, and include the name of your school or organization.** For further information, contact the Registrar at 312/719-2468. Leaders: Arboretum Teaching Naturalists. Meet in the **Visitor Center Courtyard**. Fee: \$3. **Section a: A PLACE FOR TREES.** East side locations, featuring tree identification; economic, environmental and aesthetic importance of trees. **Section b: MEADOW, LAKE AND WOODLAND.** West side locations, featuring plants and animals of the three community types, and how they have adapted to their habitats.

T501 A BOOK OF LEAVES*

Saturday, Sept. 17, 9:30 a.m. to 2:30 p.m. A special workshop for teachers who are making leaf collection assignments. If you would like to help your students learn more than they normally would from making a leaf collection, this workshop is for you. Learn how to prepare students for their collecting trips, how to collect and preserve leaves, and how to arrange collections in a logical way. As part of the workshop, you'll make a collection yourself and identify the leaves, using some helpful aids that you may want to recommend to students. We supply all materials. Dress for the outdoors; bring lunch and insect repellent. Also, bring your favorite tree identification book, if you have one. Leader: Linda Sanford. **Horticulture Lab, Research Center**. Fee: \$15 (members, \$13). Limit, 20.

T714 FALL PATTERNS IN NATURE*

Friday 4:30 p.m. & overnight to Saturday 4 p.m., November 4-5 You'll return from this Arboretum fall workshop refreshed, with a host of new teaching ideas, and new environmental perspectives to share with your students. Activities will include a walk in the restored prairie at dusk; sharing literature depicting human experiences with the "sea of grass" that once covered this region; investigations of succession, changes in the plant and animal communities in ponds, forests and open spaces; star gazing, skies permitting, to identify prominent constellations and perhaps to catch a glimpse of a passing satellite; using dichotomous keys to identify plants and insects; exploring art and language arts activities that integrate with fall activities, to develop oral and written language skills. Leaders: Fred Tarnow and Gloria Dobry. **Outpost Building**. Fee: \$65; includes materials, food and lodging. This workshop is co-sponsored by the Education Service Center, West 40. To register call 312/453-0856. **Available for 1 hr. graduate credit through National College of Education;** supplementary credit fee of \$48 is payable upon arrival.

EVENING LECTURES

L002 WHAT ARE PLANT TAXONOMISTS & WHAT DO THEY DO?

Tuesday, Oct. 4, 7:30 to 9:30 p.m. Careful taxonomy is basic to all of the Arboretum's work. Through the activities of taxonomists we discover new plants, give them names, help others tell to which species they should be assigned. But taxonomists also are often involved in other interesting projects. We invite you to join several of the Arboretum's taxonomists for a plain English explanation of what plant taxonomy is, how it's done, why it's important, who's doing what in taxonomy at the Arboretum and how you can use it. Coordinator: Ross Clark; with Floyd Swink, Bill Hess and Jerry Wilhelm. **Cudahy Auditorium, Administration Building**. Fee: Free for members, but registration required; \$3 for non-members. Limit, 100.

L003 FALL BULBS FOR SPRING BLOOMS

Thursday, Sept. 22, 7:30 to 9:30 p.m. Fall is the time for planting bulbs to brighten your home landscape. We will cover tips on selection, planting, fertilization and pests, along with how you can encourage bulbs to bloom well year after year, and how to plant a variety of types that assures a longer blooming season. Each participant will receive 3 species tulip bulbs for home planting. Leader: Ann Hruska. **Cudahy Auditorium, Administration Building**. Fee (includes bulbs): \$5 (members, \$4). Limit, 100.

L004 WHO WAS JOY MORTON?

Sunday, Sept. 25 (Arboretum Founder's Day), 2 p.m. Joy Morton, born Sept. 27, 1855, is best known to us as the founder of the Morton Arboretum. But did you know that he started the Arboretum as a retirement project when he was 66? Did you know that he and Daniel Burnham were responsible for building the Railway Exchange Building (now the Santa Fe Building) on Michigan Avenue? Or that he funded the restoration of one of the palaces in Beijing's Forbidden City in 1930? To find out more about this remarkable man and his notable family, join Arboretum Historian Carol Doty for this Founder's Day talk. **Audubon Room, Thornhill Building**. Fee: \$4 (members, \$3). Limit, 200.

FOR COLLEGE CREDIT

COOPERATIVE COLLEGE BOTANY PROGRAM

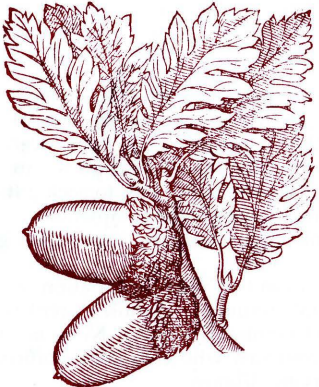
College credit is available through 15 Chicago area colleges and universities for a variety of botany courses offered throughout the year at the Arboretum. To register, contact the **Biology Department Chairperson at the school of your choice**. You may register at any participating school: Aurora University, College of St. Francis, Concordia College, Elmhurst College, Illinois Benedictine College, Judson College, Lewis University, Mundelein College, North Central College, North Park College, Olivet Nazarene University, Rosary College, St. Xavier College, Trinity Christian College, Wheaton College. **Graduate credit is available through Aurora University and St. Xavier College; call the Botany Program office (312/719-2459) for details.**

The fall 1988 Cooperative College Botany Program course is:

BIOLOGY OF THE FUNGI

A lecture/lab course that provides an introduction to the fungi, including the classification, structure, physiology, genetics and economic importance of the major groups. The laboratory will include methods of cultivation, observation of structure, development and genetics of selected fungi. Saturday field trips will be devoted to the collection and identification of fleshy fungi. **Prerequisites:** General Botany or permission of instructor. **Credit:** 4 semester hours (or 6 qtr. hrs. or 1 course equivalent, depending on where you register). **Instructor:** Dr. Dennis Hall. Monday & Wednesday, 6:30-9:30 p.m. and Saturday field work; September 19 through November 21. **Botany Lab, Research Center.**

See the Section entitled "A Look Ahead" for early 1989 college credit classes.



SPECIAL LECTURE

L001 NATIONAL TRUST GARDENS, WITH PENELOPE HOBHOUSE
Wednesday, Oct. 5, 1:30 p.m.
We are pleased to announce that one of England's leading gardeners and garden writers will present an illustrated lecture on "National Trust Gardens and Gardening" at the Arboretum this fall. Penelope Hobhouse writes regularly on garden topics for garden journals and newspapers. Among the books she has authored are: *The Country Gardener*; *Gertrude Jekyll on Gardening*; *Color in Your Garden*; *Private Gardens of England*; *The Smaller Garden*; and *Garden Style*. She lectures widely in both England and this country and works as a garden consultant. With her husband, John Malins, she is presently in charge of the National Trust Garden at Tintinhull House in Somerset. We invite you to remain after Ms. Hobhouse's program for an informal reception in the Founder's Room.
Audubon Room, Thornhill Building. Fee: \$9. Limit, 200.



Penelope Hobhouse

PHOTO: JAMES R. SEAMS

FIELD TRIPS

Driving directions will be sent to registrants.

F060a **BIRDING AT CRABTREE NATURE CENTER***
Saturday, Sept. 24, 8 a.m. to 2 p.m.
Crabtree is one of the newest Cook County Forest Preserve nature centers—more than 1000 acres of rolling, postglacial landscapes, located near Barrington. Our birding activities will take us through a variety of habitats, including bur oak woodlands, wetlands and prairie. Bring your lunch and beverage, in addition to binoculars and field guides.
Leaders: Gloria Dobry & Mike Spravka. Fee: \$10. Limit, 25.

F060b **BIRDING IN JASPER-PULASKI***
Sunday, Oct. 9, 9 a.m. to 2 p.m.
The sandhill crane is one of the most ancient bird species still in existence, with a fossil history extending back for six million years. Most of the approximately 6000 sandhill cranes in the eastern population stop at Jasper-Pulaski during migration. The highlight of our trip will be observation of a large concentration of these interesting birds. We'll also observe large numbers of Canada geese and other waterfowl.
Leaders: Gloria Dobry & Mike Spravka. Fee: \$10. Limit, 25.

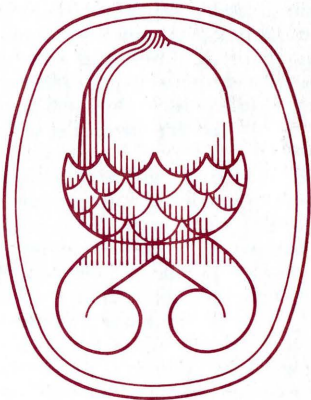
F060c **BIRDING IN THE PALOS AREA***
Saturday, Oct. 22, 9 a.m. to noon
As we focus primarily on migrating waterfowl, we'll take you throughout the area to show you several wetland sites that are particularly good for viewing birds. Bring your lunch and beverage, in addition to field guides, binoculars (and spotting 'scope, if you have one). **Meet at the Little Red Schoolhouse Nature Center** on Willow Springs Road, ½ mile south of 95th Street, south of Willow Springs.
Leaders: Gloria Dobry & Mike Spravka. Fee: \$10. Limit, 25.

F054 **ILLINOIS BEACH STATE PARK***
Friday, Sept. 30, 10 a.m. to 2:30 p.m.
Join us for an outing to an especially interesting part of our inland coastline! Observations of geology, native vegetation, wildflowers and fauna will be included. Bring your lunch and beverage. **We will meet at the Park's Nature Center at 10 a.m. sharp.**
Leader, Floyd Swink. Fee: \$16. Limit, 35.

F125 **GRACEFUL FORMS: INDIANA DUNES IN AUTUMN***
Saturday, Oct. 15, 8 a.m. to 5 p.m.
Some of North America's pioneering work in plant ecology was accomplished in the Lake Michigan dunes. Many plants common in the dunes are rare or absent elsewhere in the region, and the dynamic shoreline illustrates important ecological concepts. Join us as we read the landscape in this special place. Bring lunch and beverage.
Leader: Craig Johnson. Fee: \$16. Limit, 25.

A LOOK AHEAD

COLLEGE CREDIT COURSES, EARLY 1989
Two courses will be offered for credit in the Cooperative College Botany Program in winter-spring 1989.
INTRODUCTION TO HORTICULTURE will be offered for 3 semester hrs. of undergraduate credit on Wednesdays, 6:30 to 9:30 p.m., with Saturday field and lab work, January 25 through April 22. Instructor will be Pamela Wolfe, M.A.
MOSESSES AND LICHENS (3 semester hrs. undergraduate credit) will run on Mondays, 6:30 to 9:30 p.m. with Saturday field work, January 23 through April 22. Drs. Jerry Wilhelm and Jim Rastorfer will co-instruct the class.
For further details, watch for the Winter 1989 issue of this bulletin, or call the College Botany Program office at 312/719-2459.



MEMBERSHIP

Arboretum members receive discounts for classes, lectures, and most field trips, as well as preference in registration. If you are not a member, we invite you to join us. Members also receive free admission and parking; subscriptions to the *Quarterly* and to *Events News & Classes*; invitations to special events and exhibit openings; and the opportunity to grow plants as participants in a cooperative research program. Just fill in the application below. An Arboretum membership also makes a fine gift for someone special.

REGISTRATION INFORMATION

You may register by mail or in person; we cannot accept telephoned registrations for classes. In-person registrations are accepted at the Registrar's office (Administration Building) or the Visitor Center. Full fees are due upon registration; checks should be made payable to the Morton Arboretum. If your attendance in a class is contingent upon the registration of another student, please bracket your names on the registration blank. You are registered unless notified otherwise; we cannot notify you by mail.

Cancellations and refunds. The Arboretum may cancel activities for which there is insufficient enrollment. Decisions to cancel underenrolled activities are made 10 days prior to the beginning of the first class meeting. **If the Arboretum cancels** an activity, you will receive a full refund; **if you cancel** registration prior to the 10-day deadline, you will receive a refund less \$5 for handling (no refunds for \$5 or less); no refunds after the 10-day deadline. Registrations and fees are not transferable. **If you find that you cannot attend a class after registering**, please let us know promptly by calling the Registrar at 312/719-2468, so that we may call someone on the waiting list.

Priority for Registration. Members receive priority for registration up to the suggested date for registration given below. After that date, registration is first-come, first-served for all.

OUR INSTRUCTORS

FULL-TIME ARBORETUM EMPLOYEES
KRIS BACHTELL, *Propagator*
ROSS CLARK, *Curator of Adult Education*
CAROL DOTY, *Curator of Special Programs in Education*
NANCY HART, *Art Coordinator & Curator of Rare Prints*
ED HEDBORN, *Plant Recorder & Computer Information Manager*
BILL HESS, *Curator of the Herbarium*
GARY IRVING, *Staff Photographer*
CRAIG JOHNSON, *Education Group Administrator*
CHARLES LEWIS, *Collections Group Administrator & Horticulturist*
IAN MACPHAIL, *Research Fellow & Curator of Rare Books*
LINDA SANFORD, *Curator of Youth Education*
MIKE SPRAVKA, *Research Assistant*
FLOYD SWINK, *Taxonomist*
TONY TYZNIK, *Landscape Architect*
DICK WASON, *Staff Naturalist*
JERRY WILHELM, *Research Field Taxonomist*

ADDITIONAL INSTRUCTORS
SALLY BAUMGARDNER, *Teaching Naturalist, Naperville*
RAY BROWN, *Teaching Naturalist, Woodridge*
ALICE BURKMAN, *Teaching Naturalist, Oswego*
GLORIA DOBRY, *Teaching Naturalist & Science Teacher, Chicago*

MARILYN ELLISON, *Teaching Naturalist, Lockport*
IDA GABLER, *Teaching Naturalist, Arlington Heights*
EMILY GALVIN, *Teaching Naturalist, Glen Ellyn*
DENNIS HALL, *Professor of Biology, Eastern Illinois University*
PENELOPE HOBHOUSE, *Garden Writer & Consultant, England*
ANN HRUSKA, *Horticulturist, New Berlin, WI*
ARLENE KOERNER, *Teaching Naturalist, Shorewood*
NANCY LUDWIG, *Teaching Naturalist, Lisle*
LOIS MYERHOLTZ, *Teaching Naturalist, Naperville*
ANNE NORTON, *Free-lance Artist, Geneva*
HELEN PIERCE, *Teaching Naturalist, Glen Ellyn*
JAMES RASTORFER, *Professor of Biology, Chicago State University*
MARY RICE, *Teaching Naturalist, Wood Dale*
ROBERTA ("PEACH") SIMONDS, *Botanical Illustrator, Wheaton*
FRED TARNOW, *Science Curriculum Consultant, Schaumburg*
MARJORIE WALLS, *Teaching Naturalist, Geneva*
CAROL WAX, *Teaching Naturalist, Oak Park*
PAMELA WOLFE, *Horticulturist, Downers Grove*

EVENTS, NEWS, AND CLASSES PRODUCTION STAFF
Curator of Education: Ross Clark
Graphic Designer: Nancy Hart
Editor, Production Coordinator: Joseph Larkin

SEND APPLICATION AND FEES TO: REGISTRAR, THE MORTON ARBORETUM, LISLE, ILLINOIS 60532

REGISTRATION FORM IT WILL HELP IF YOU REGISTER BY AUG. 22

Name: _____ ☐ Member ☐ Non-member

Address: _____ Daytime telephone: _____

Town: _____ Zip: _____ Evening telephone: _____

Class #	Sect.	Class Title	Applicant's Name	Fee	
TOTAL ENCLOSED					

Make checks payable to THE MORTON ARBORETUM

FOR OFFICE USE ONLY	ENT	MATL's	MEMBER#	REFUNDS: \$
RCD				#
				DATE:

MEMBERSHIP APPLICATION

Please make checks payable to THE MORTON ARBORETUM and mail to: Membership Office, The Morton Arboretum, Lisle, Illinois 60532.

Name	Date
Address	Daytime telephone
Town	Zip
Evening telephone	
<input type="checkbox"/> New	<input type="checkbox"/> Renewal
Type of membership preferred:	
<input type="checkbox"/> Individual \$25	<input type="checkbox"/> Family \$35
<input type="checkbox"/> Contributing \$100 or more	
MasterCharge No. _____	
Visa (BankAmericard) No. _____	
Credit card expiration date: _____	
Signature: _____	
Is this a gift membership? <input type="checkbox"/> yes <input type="checkbox"/> no	
If yes, from whom _____	
Address	
Town	Zip
Telephone	

THE MORTON ARBORETUM
LISLE, ILLINOIS 60532

Non-Profit
Organization
U.S. Postage
PAID
Permit Number 7
Lisle, Illinois

*EVENTS,
NEWS,
&
CLASSES*

DATED MATERIAL